

4

3

2

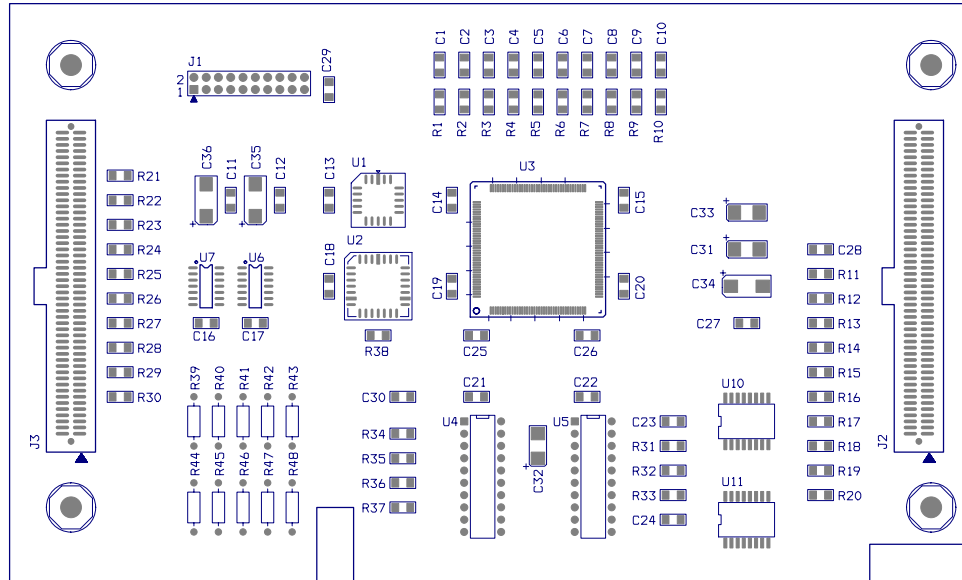
DWG NO. MPL-22 SH. 1 REV. 1.0

NOTES:

- 1. CIRCUIT CARD SHALL BE ASSEMBLED IN ACCORDANCE WITH IPC-A-610B.
- 2. ESD PRECAUTIONS FOR CLASS 1 AND CLASS 2 ESD DEVICES SHALL BE USED WHEN HANDLING ALL COMPONENTS AND ASSEMBLIES OF THIS BOARD.
- 3.

REVISIONS				
ZONE	REV	DESCRIPTION	DATE	APPROVED
-	-	-	-	-

SAMPLE



D

D

C

C

B

B

A

A

				UNLESS OTHERWISE SPECIFIED DIMENSIONS ARE IN INCHES. TOLERANCES ARE: FRACTIONS DECIMALS xxxp xxxp - xxxp -		CONTRACT NO.		MPL Incorporated 41 Dutch Mill Road Ithaca, New York 14850 Phone: 607-266-0480 Fax:607-266-0482			
				DO NOT SCALE DRAWING		APPROVALS		DATE		TITLE	
				MATERIAL		DRAWN		M. Designer		04/21/03	
				FINISH		CHECKED				MPL-22 QUOTE SAMPLE	
				SIMILAR TO		ENGR				SIZE	
				SPECIAL MARKING SYM		DESIGN ACTIVITY				CAGE CODE	
										DWG NO.	
										MPL-22	
										REV.	
										1.0	
								SCALE		DATE	
								1:1		04/25/03	
								SHEET		1 OF 1	

4

3

2

1